



OUDE WYN  
IN NIEUWE  
ZAKKEN

*Shift left, right?*

*Old school or hot news*



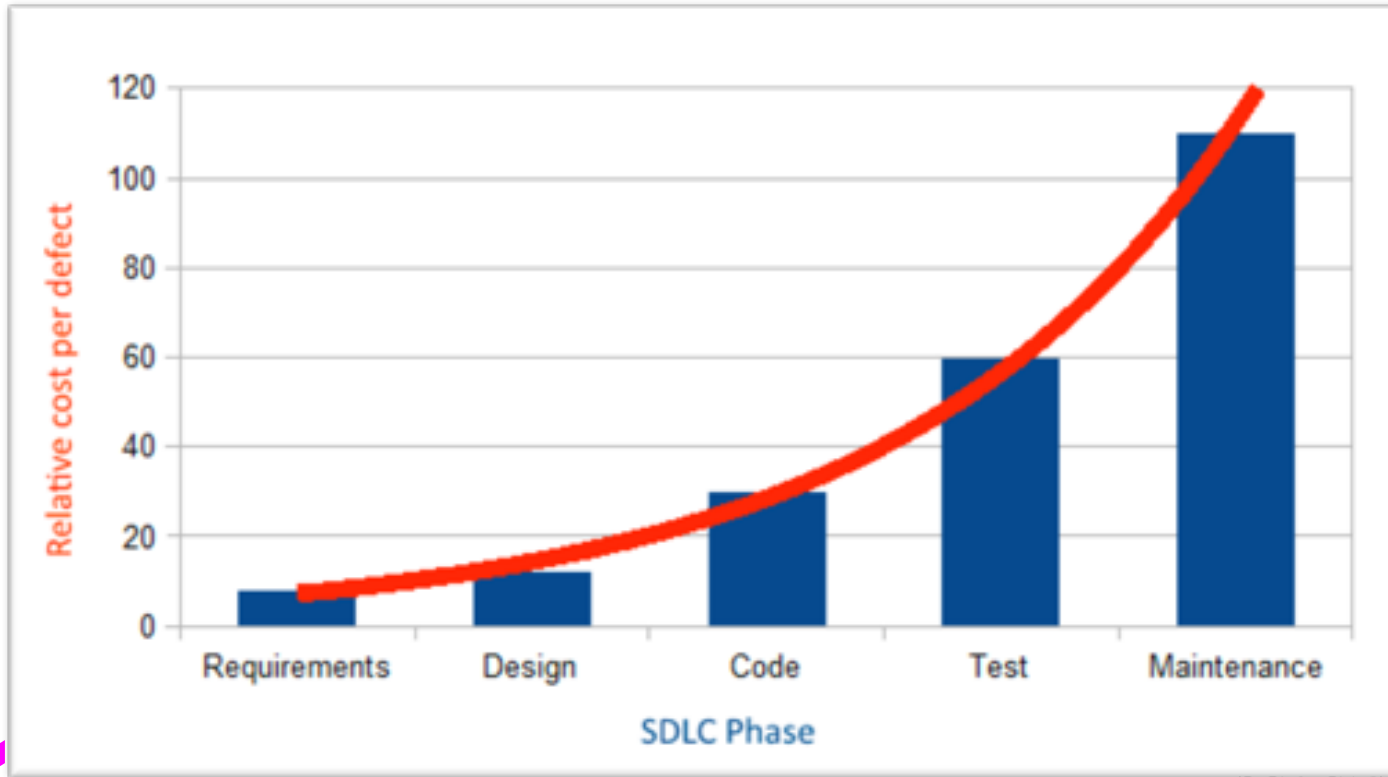
# Wikimedia

**Shift left testing** <sup>[1]</sup> is an approach to [software testing](#) and [system testing](#) in which testing is performed earlier in the lifecycle (i.e., moved left on the project timeline). It is the first half of the maxim "Test early and often." <sup>[2]</sup>



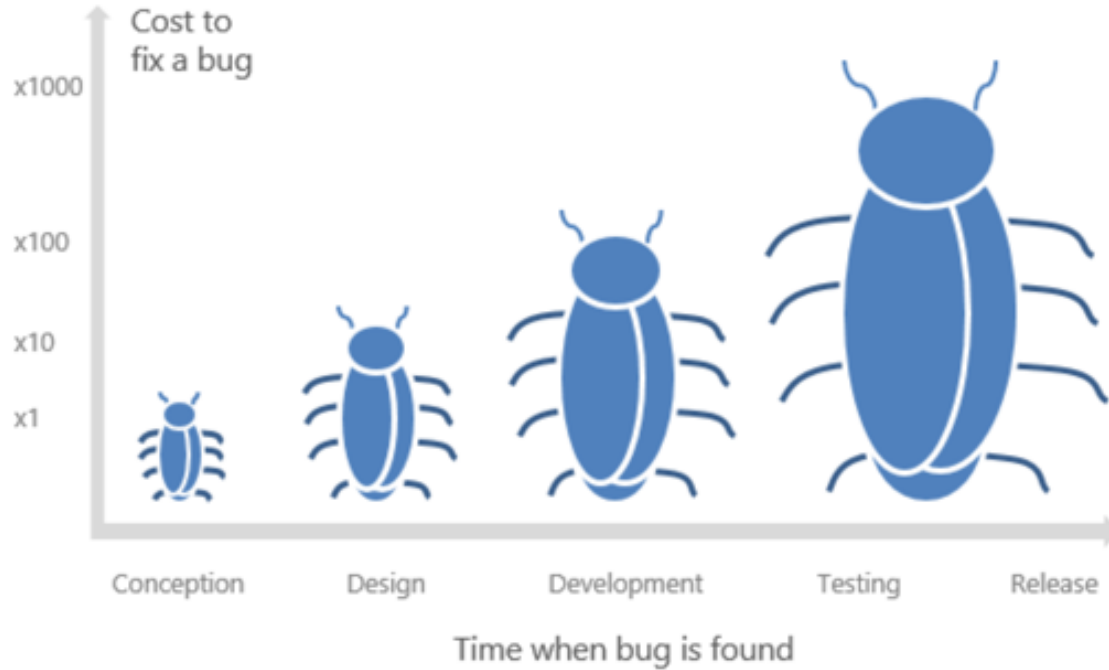
*Test earlier*  
*→ Cheaper*  
*→ Faster*  
*→ Cheaper*

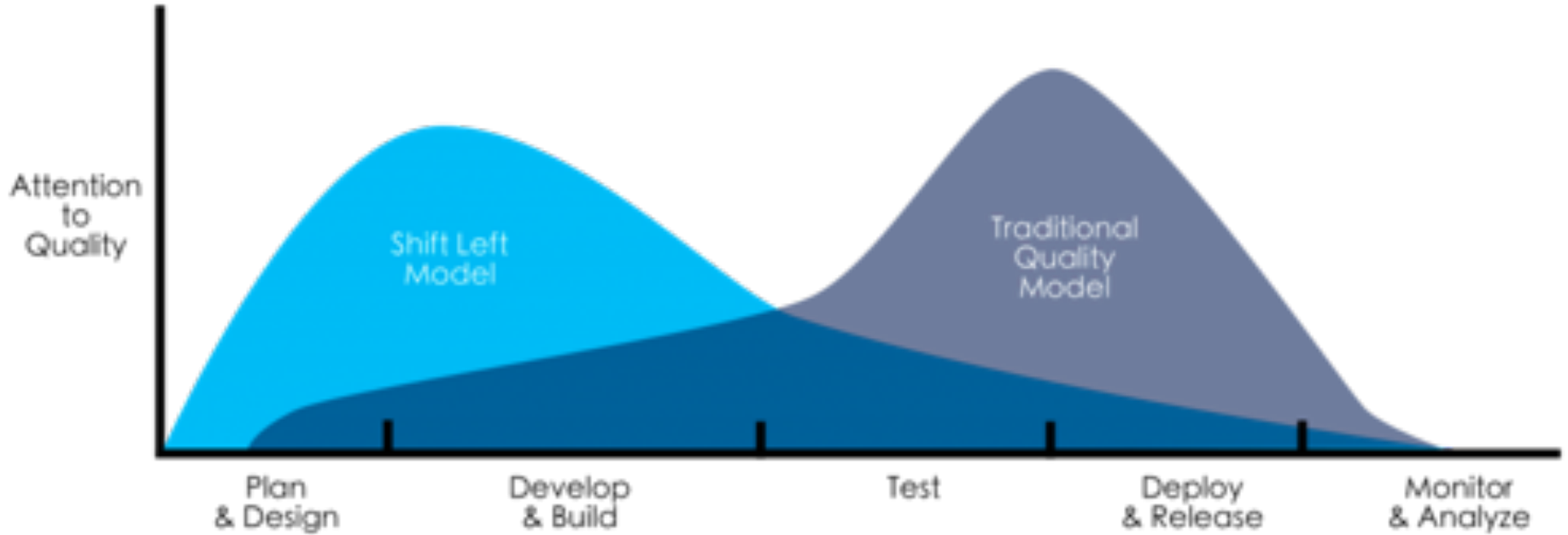
# Cost of a defect - Boehm Curve



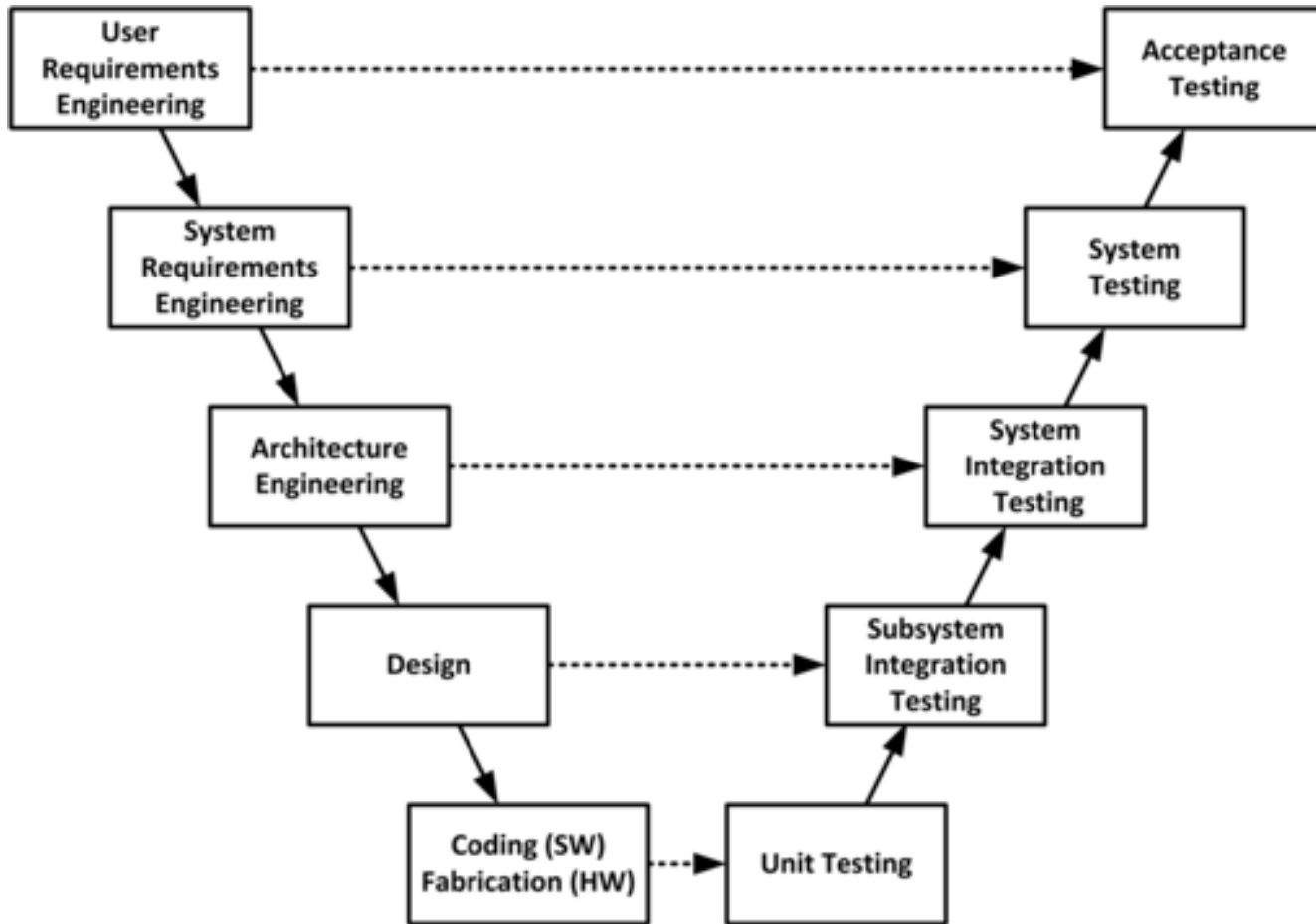
tal to work

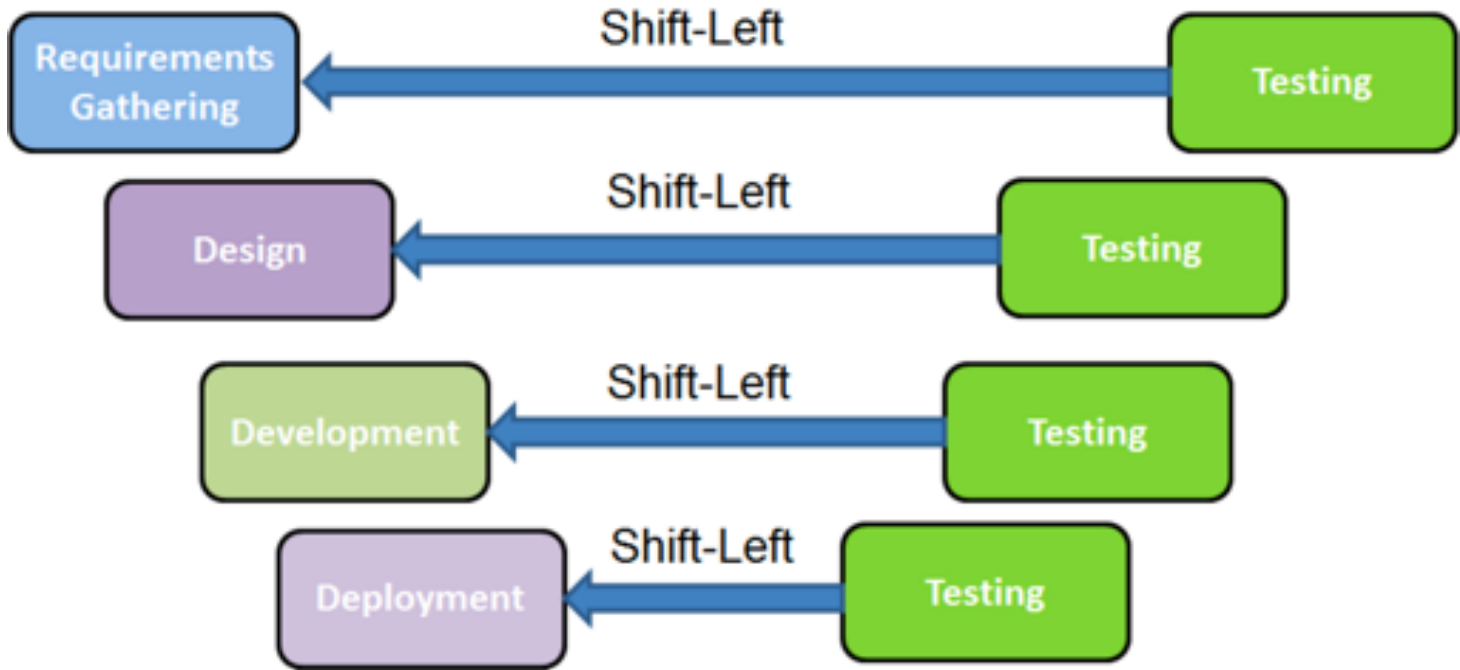
# Cost of a defect - Boehm Curve





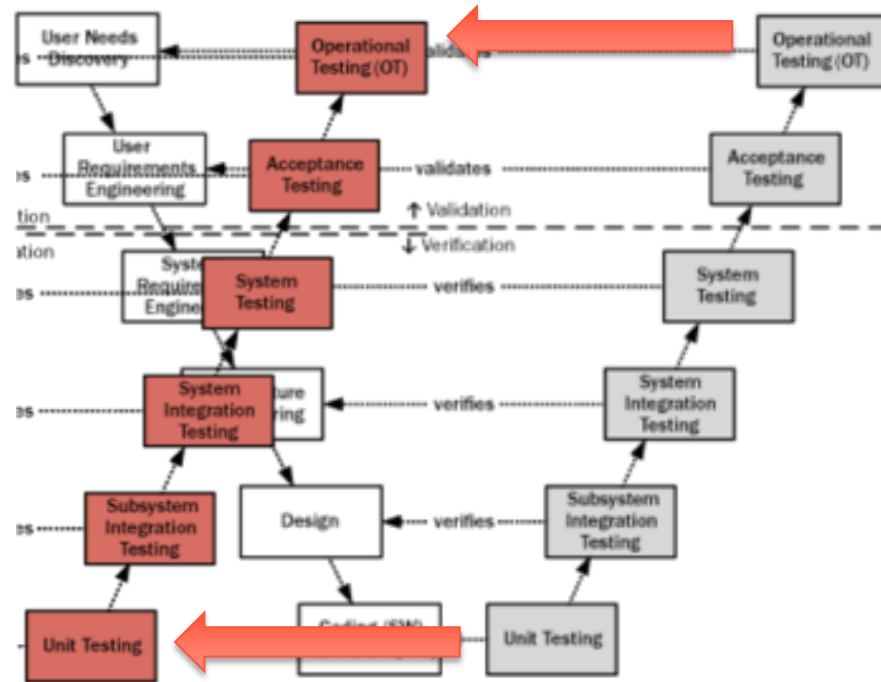
put digital to work



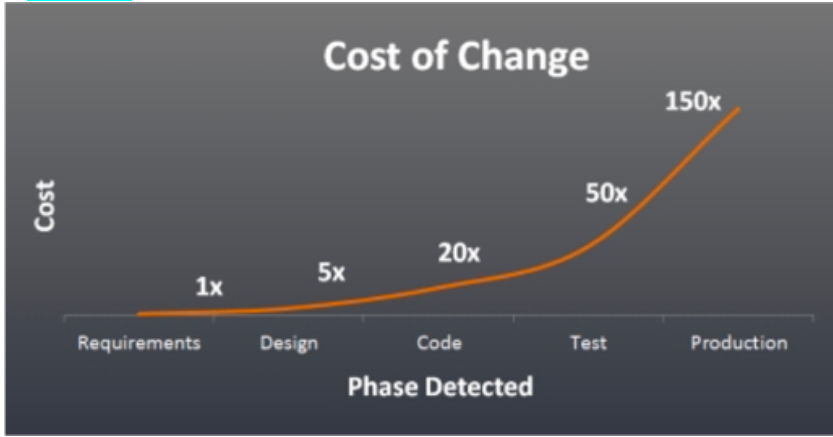


put digital to work





put digital to work



HOW NOT TO BUILD A MINIMUM VIABLE PRODUCT



ALSO HOW NOT TO BUILD A MINIMUM VIABLE PRODUCT



HOW TO BUILD A MINIMUM VIABLE PRODUCT



FRED VOORHORST

WWW.EXPRESSIVEPRODUCTDESIGN.COM

put digital to work

# Scrum framework



put digital to work

Q2 AUTOMATED & MANUAL



FUNCTIONAL TESTING



SIMULATIONS



STORY TESTS



PROTOTYPES

BUSINESS

FACING



SCENARIOS



USER ACCEPTANCE TESTING

MANUAL Q3



USABILITY TESTING



EXPLORATORY TESTING

CRITIQUE

THE TEAM

# AGILE TESTING QUADRANTS

FROM LISA CRISPIN AND JANET GREGORY

PRODUCT

SUPPORTING



UNIT TESTING



TEST-DRIVEN DEVELOPMENT



COMPONENT TESTING



LOAD TESTING



PERFORMANCE TESTING



SECURITY TESTING

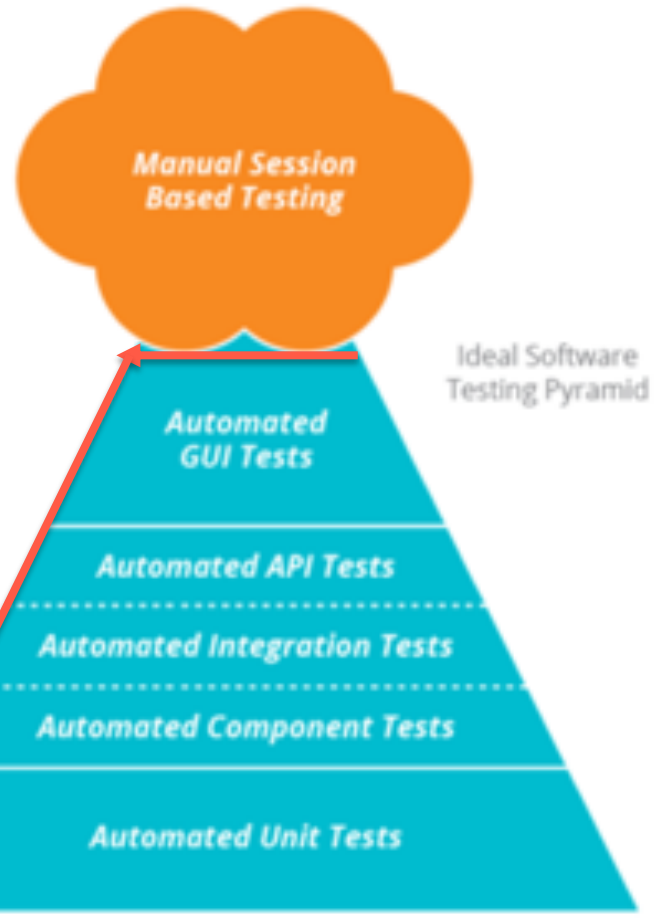
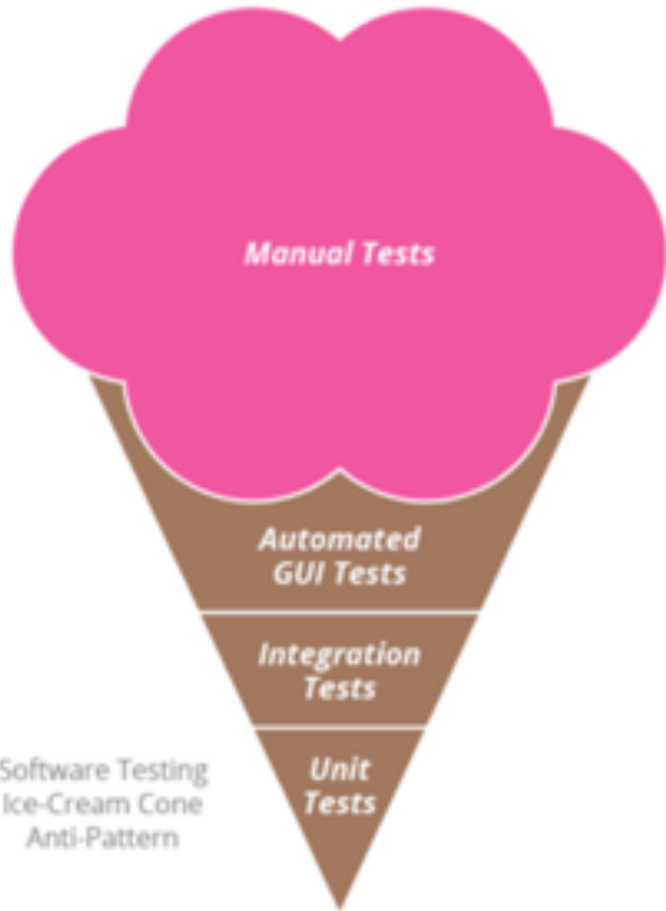
...  
"ILITY"  
TESTING

Q1 AUTOMATED

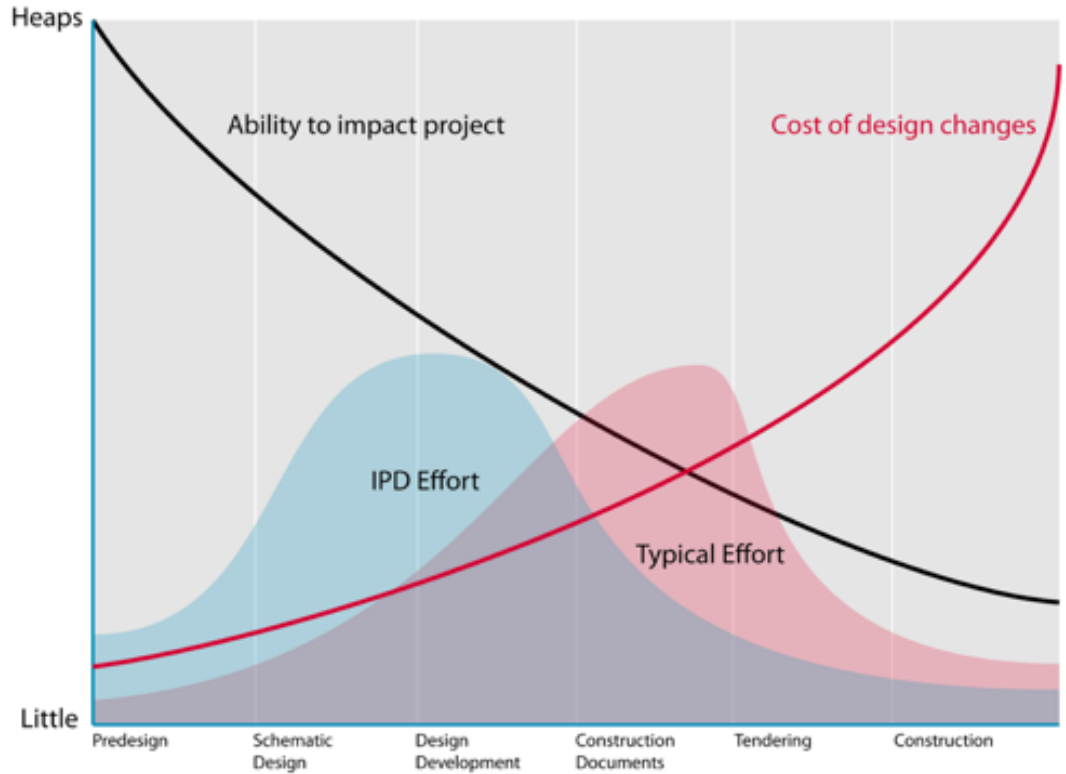
TECHNOLOGY

FACING

TOOLS Q4



- First Time Right
- Quality by design
- Build in Quality



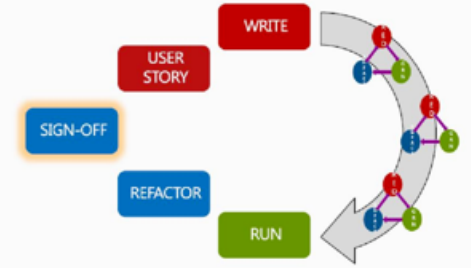
put digital to work

# Acceptance Test Driven Development

- Emphasis on developer-tester-business customer collaboration
- Communication tool, understanding
- Ensure reqs are well defined
- Automated Testing optional
- Based on Specification by Example (SBE)

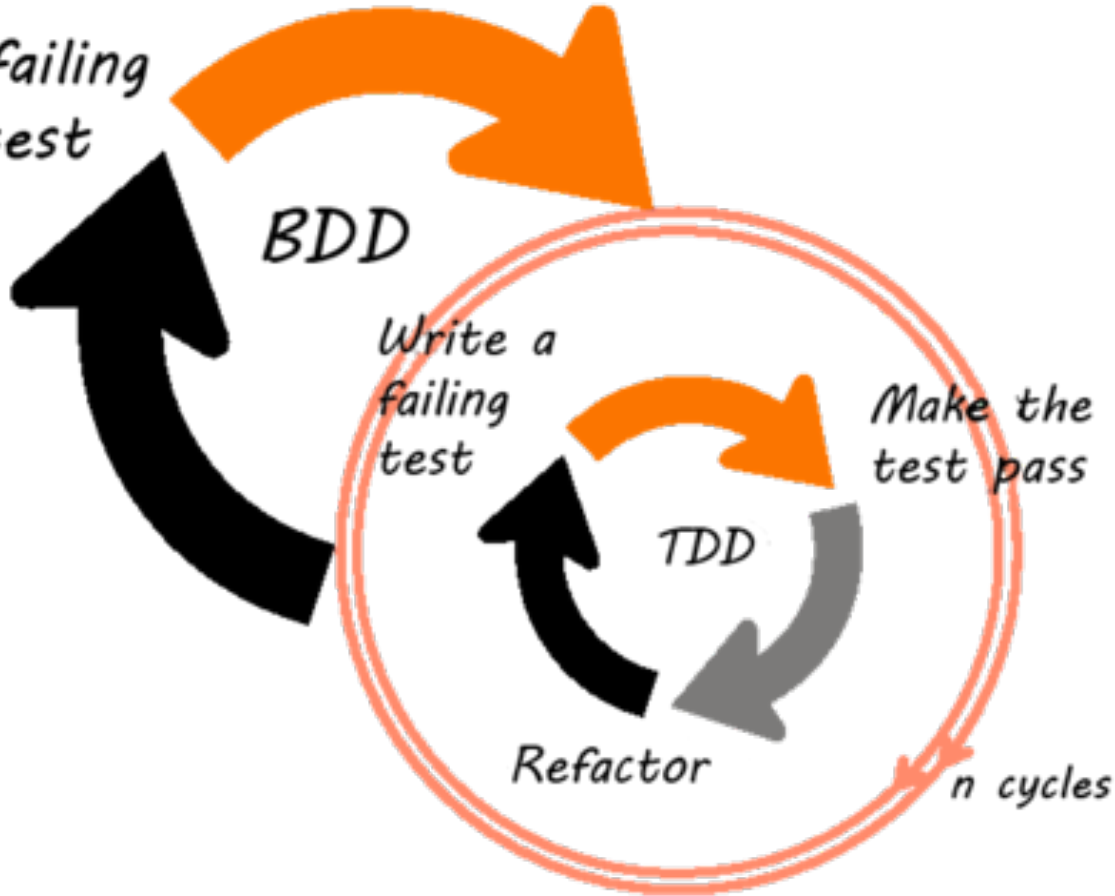
(Acceptance Test Driven Development)

- ▶ Select User story
- ▶ Write Acceptance Test
- ▶ Implement User Story
- ▶ Run Acceptance Test
- ▶ (Refactor)
- ▶ Get Sign-Off



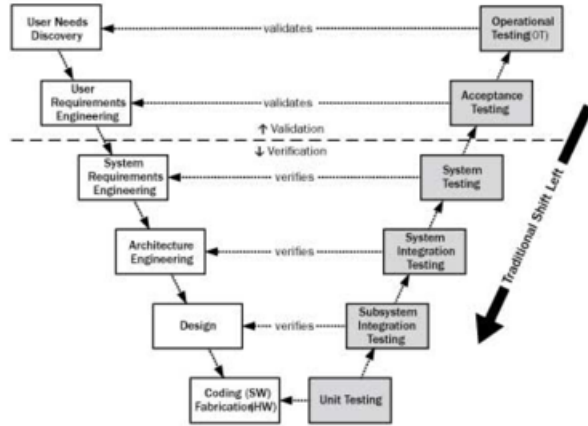
put digital to work

Write a failing feature test





# Waterfall



# Agile



put digital to work

# From Quality control To Quality Assurance

put digital to work



# THE TESTING *Manifesto*



we value:

Testing  
throughout  
**OVER**  
testing at  
the end

Preventing  
bugs  
**OVER**  
finding  
bugs

Testing  
understanding  
**OVER**  
checking  
functionality

Building the  
best system  
**OVER**  
breaking the  
system



Team  
responsibility  
for quality  
**OVER**  
tester  
responsibility



# What makes the difference?

- development methodology?
- Tools?
- Environment?
- Culture?
- Mindset?





# My Manifesto of Shift Left



Join my session ;-)

put digital to work

  
~~Testing~~

Quality



put digital to work





put digital to work



Sebastiaan Van Gucht  
Business Unit Manager Specialized Testing Services  
[sebastiaan.vangucht@tobania.be](mailto:sebastiaan.vangucht@tobania.be)  
m +32 (0) 476/39 03 38

Philippe Damen  
Business Manager Specialized Testing Services  
[Philippe.Damen@tobania.be](mailto:Philippe.Damen@tobania.be)  
m +32 (0) 484/62 34 63