

Is er een nieuwe (test) wandelkaart?

Heini Veneberg

Mei 2018



Learn, create
and make
it work

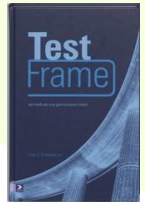
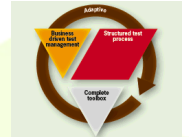
Agenda

1. Introductie
2. Wandelroute
3. Scaled agile de oplossing voor alles of
4. T-shape combinaties
5. Toekomst – be prepared for
6. Samenvatting



1. Introductie (1/2)

- Heini Veneberg; 52 jaar
- Technisch Manager/Senior Testmanager



Stichting Kinderhulp
Tsjernobyleramp Wit Rusland





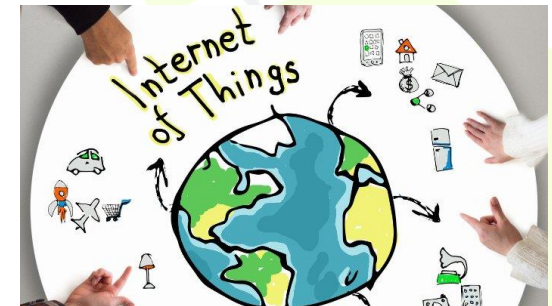
1. Introductie (2/2)



Learn, create and make it work!



Vestigingen



2. Wandelroute



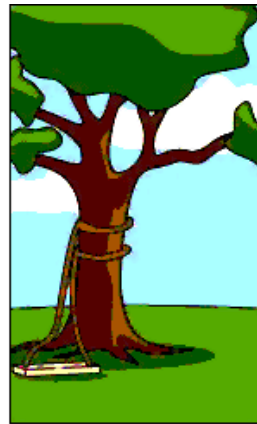
How the customer explained it



How the project leader understood it



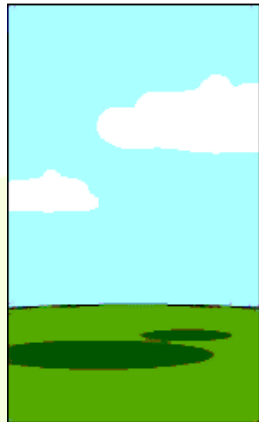
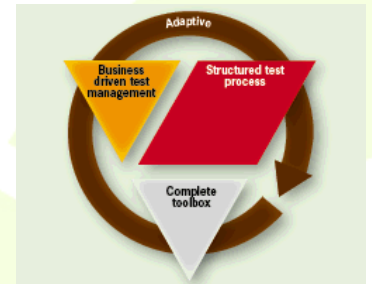
How the Analyst designed it



How the Programmer wrote it



How the Business Consultant described it



How the project was documented



What operations installed



How the customer



2. Wandelroute



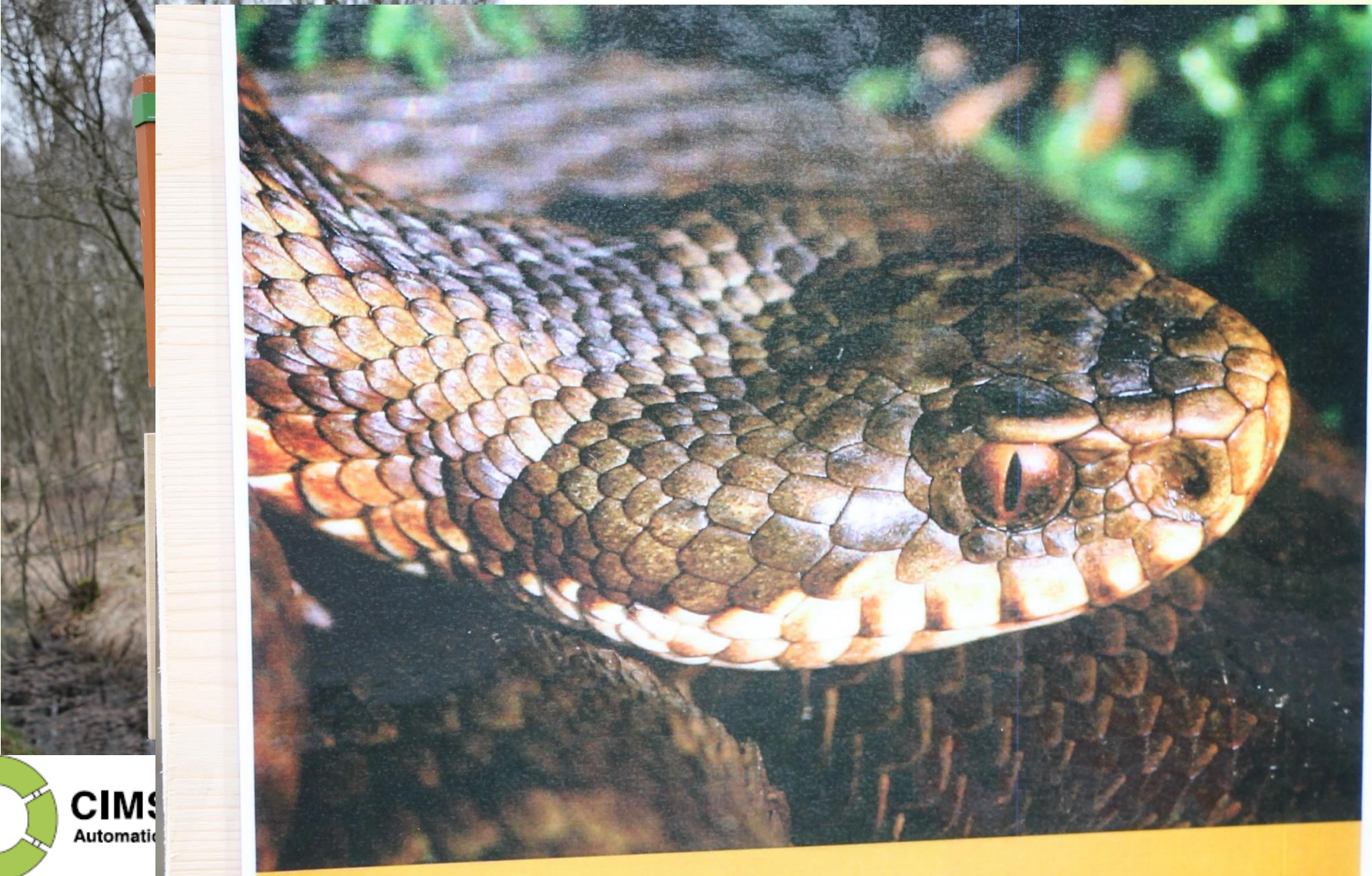
Bild 2

CLOSE X

TEST NET

ness

2. Wandelroute



CIMS
Automatic

2. Wandelroute

7 Les Bouquetins

Golf

Sodoleuvre 1462m

Alpe des Chaux 1554m

Le Fratchi 1421m

DU CÔTÉ DU VALLON DE NANT

35	Gorges de l'Avançon : La Peuffaire - Frenières - Les plans	5.5
36	Pont de Nant-Trou à l'Ours - Cinglo- Pont de Nant	6.7
37	Javerne - La Tourche-Javerne	6.7
38	Les Plans - Euzanne - Col des Pauvres - Cinglo - Pont de Nant	11
39	Les Plans - La Vare - Cabane de Plan Névé	5.1

DU CÔTÉ DE BEX & OLLON

40	Les Dévens - Antagnes - Salaz - Les Devens	7.5	2h05	255/255
41	Le tour du Montet	7.4	2h15	305/305
42	Le sentier de Provence - Vershiez - Ollon	2.9	1h	156/208
43	Le Sentier des vignes	26	7h45	1027/995

DE LA MONTAGNE A LA PLAINE

44	Gryon - Fenalet - le Chêne - Le Bouillet	6.4	2h30	88/619
45	Quand la montagne descend à la vigne : Villars-Le Bevieux	7.4	2h30	185/954
46	Le Sentier du Sel : Salin - Le Bévioux	15 km	4h	473/955

exigent de la part du randonneur une plus grande prudence, l'expérience de la montagne, un équipement résistant aux intempéries et des chaussures à semelles antidérapantes. Ils sont balisés en couleur BLANC-ROUGE-BLANC.

MOUNTAIN TRAIL, alpine passes, along ridgeways, leading up to alpine club huts, mountain peaks, etc., for which special equipment such as weatherproof clothing and good shoes with non-slip soles are required, and which call for particular experience and caution. These trails are signposted WHITE-RED-WHITE.

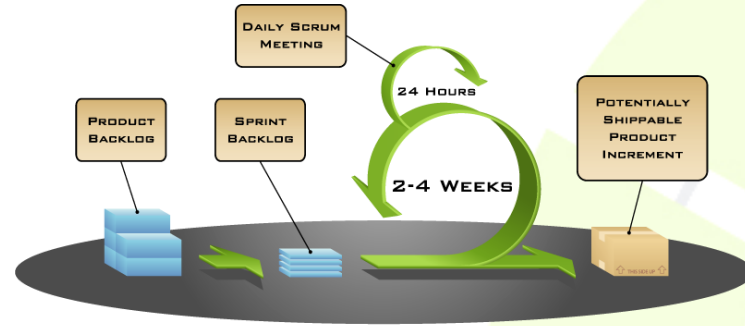
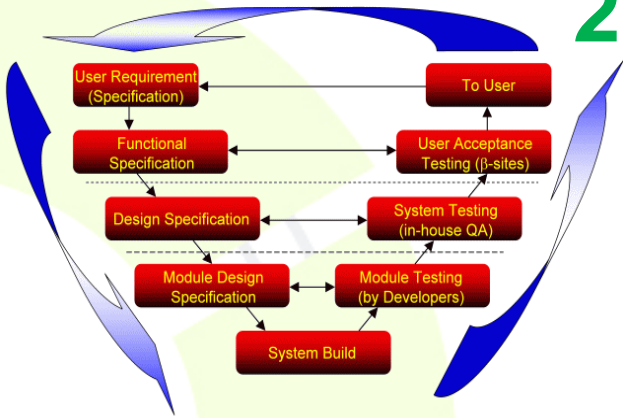
BERGWEG ALPENPÄSSE, klubhütten-zugänge, gipfelwege, usw... Diese Wege verlangen eine grössere Anforderung an die Ausrüstung des Wanderers in bezug auf wetterfeste Kleidung, geeignete Schuhe mit griffigen Sohlen und verlangen besondere Erfahrung und Vorsicht. Die Markierung dieser Wege ist mit den Farben WEISS-ROT-WEISS gekennzeichnet.

CHEMIN DE RANDONNÉE ALPINE. Chemin présentant des dangers particuliers tels que tronçons d'escalade et traversée de glaciers. Usage à son propre risque. Equipement alpin requis. Uniquement pour les randonneurs qui ont le pied ferme, ne souffrent pas de vertige et ont une expérience de la montagne.

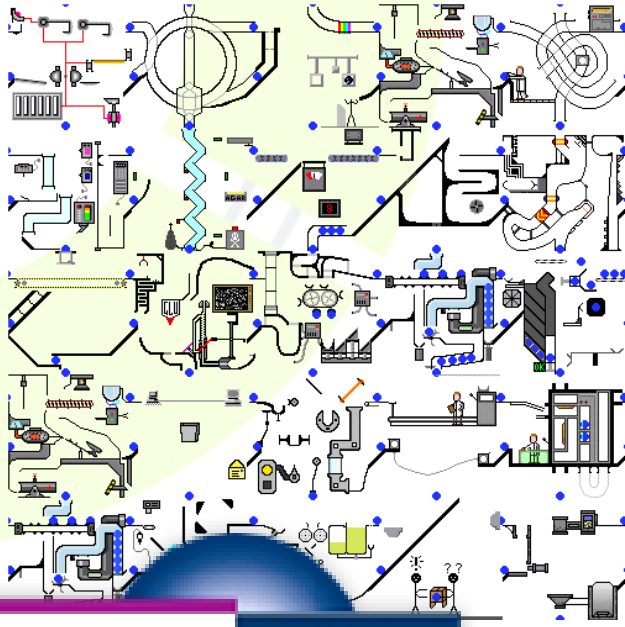
ALPINE TRAIL. particularly dangerous path with climbing points and glacial crossings, for use at your own risk, mountaineering equipment is essential, only for experienced hikers without vertigo.

ALPINWANDERWEG. Weg mit besonderen Gefahren wie Kletterstellen und Gletscherquerungen, Benützung auf eigenes Risiko, alpine Ausrüstung erforderlich, nur für trittsichere, schwindelfreie und bergerfahrene Wanderer.

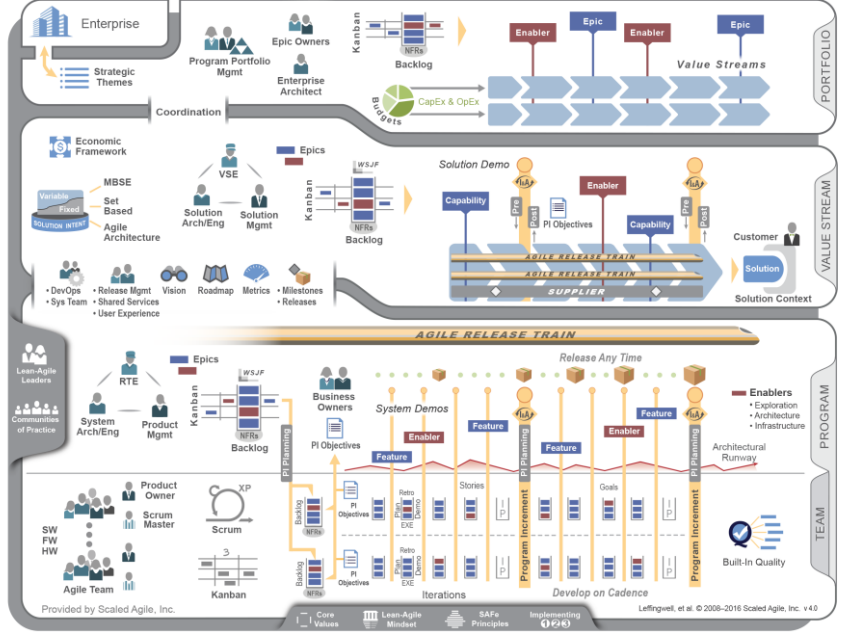
2. Wandelroute



COPYRIGHT © 2005, MOUNTAIN GOAT SOFTWARE



SAFe® 4.0 for Lean Software and Systems Engineering

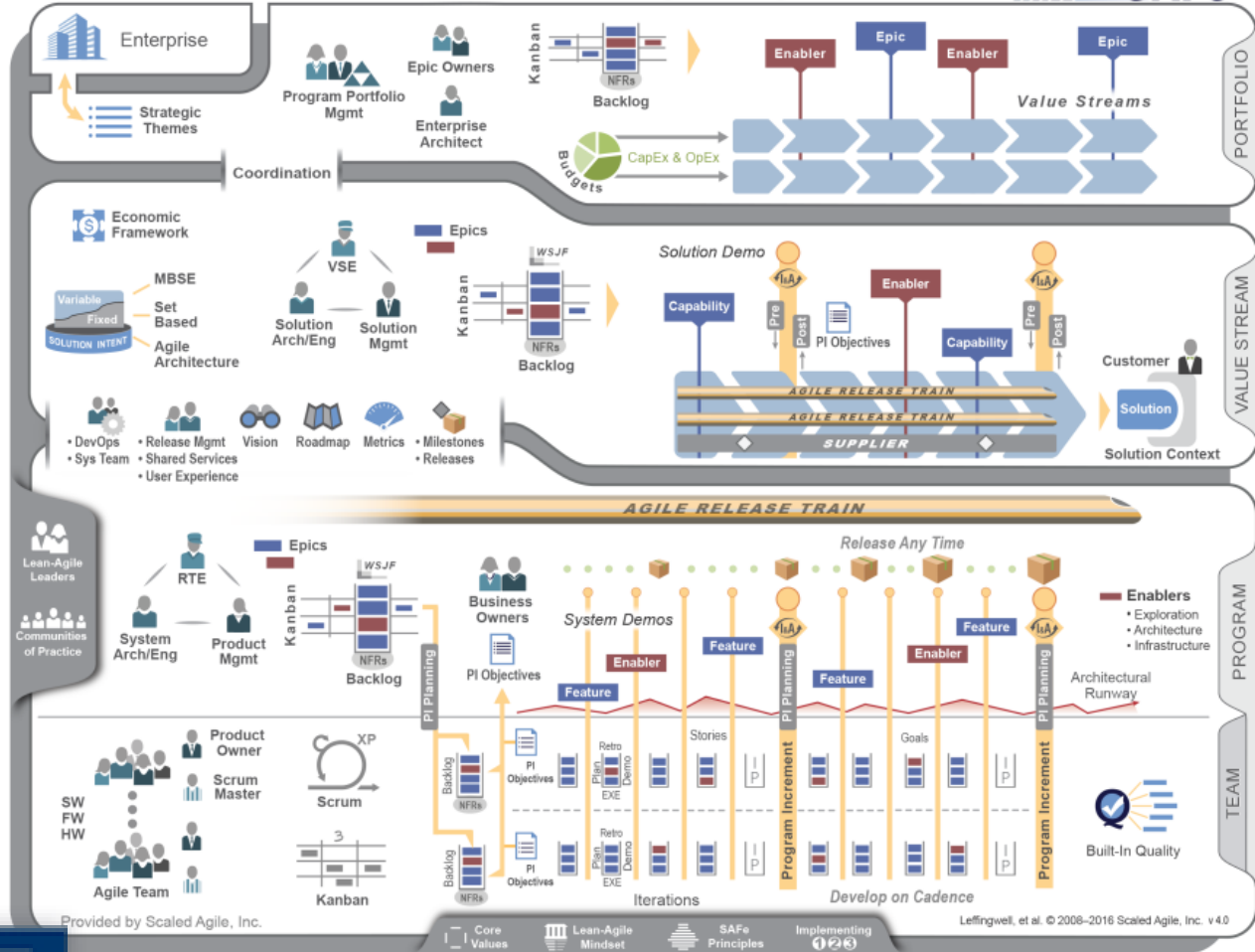


TEST-NET is

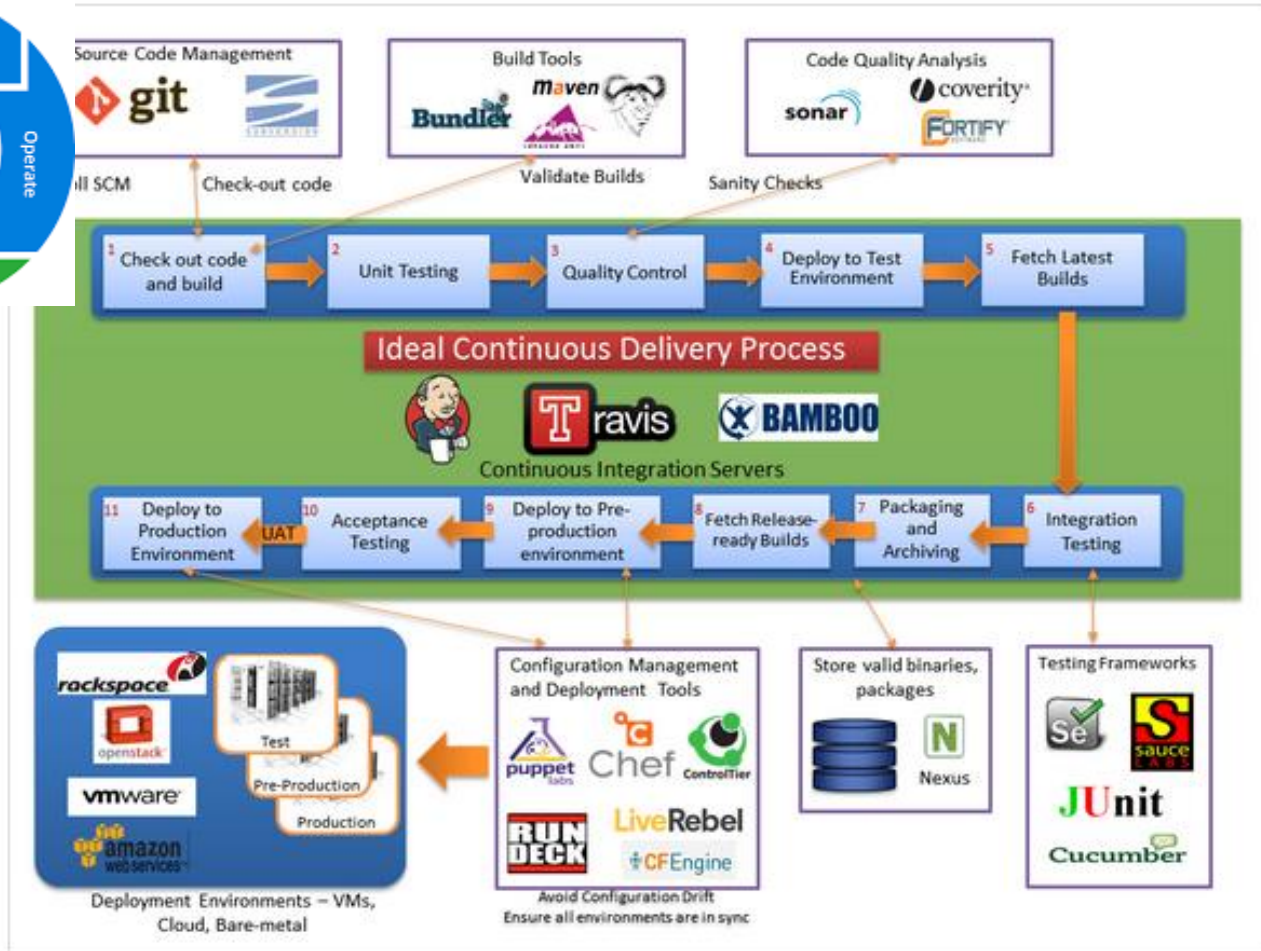
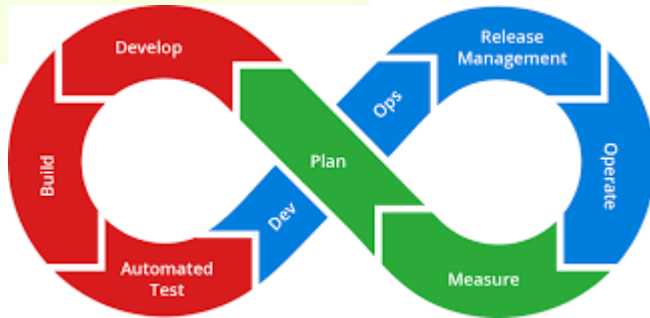
3. Scaled agile de oplossing voor alles of ..(1/5)



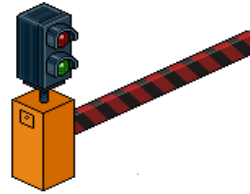
SAFe® 4.0 for Lean Software and Systems Engineering



3. Scaled agile de oplossing voor alles of ..(2/5)



3. Scaled agile de oplossing voor alles of ..(3/5)



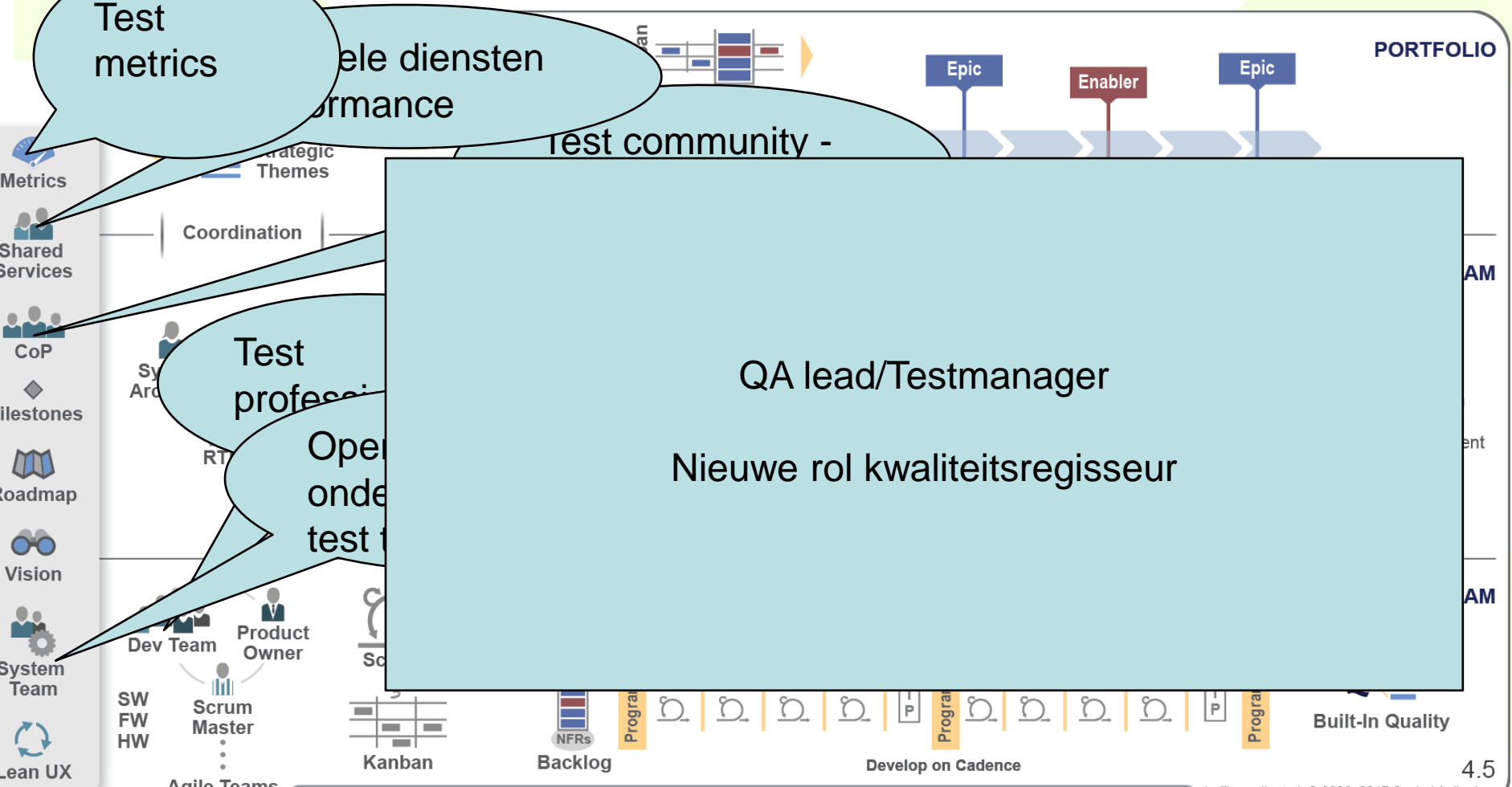
Test rapport

TEST • NET • S
ness

3. Scaled agile de oplossing voor alles of ..(4/5)



3. Scaled agile de oplossing voor alles of (5/5)



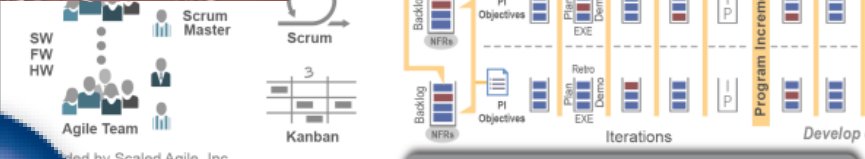
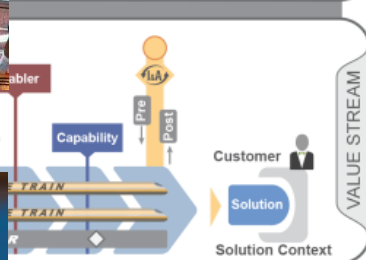
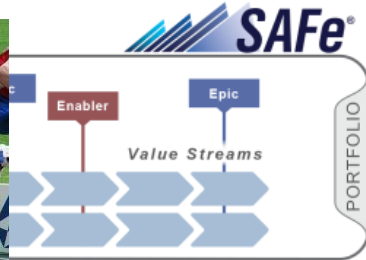
Lean-Agile Leaders
 Core Values
 Lean-Agile Mindset
 SAFe Principles
 Implementation Roadmap
 SPC

Leffingwell, et al. © 2008–2017 Scaled Agile, Inc.

4. T-shape combinaties



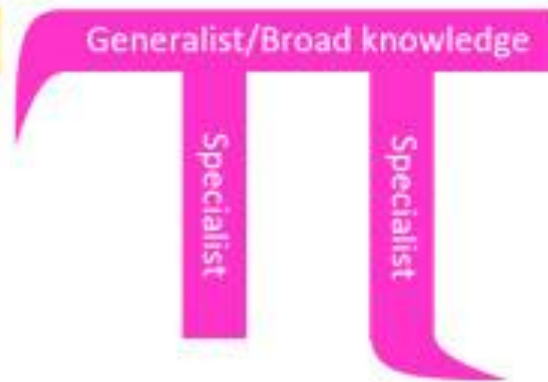
4. T-shape combinaties



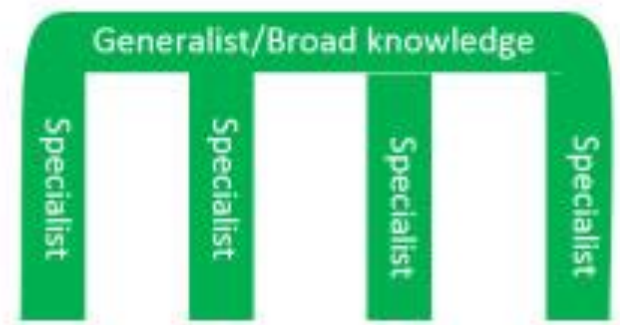
4. T-shape combinaties



T-shaped



Pi-shaped



Comb-shaped



4. T-shape combinaties



It's your choice



4. T-shape combinaties



APPLICATION SERVICES LIBRARY

asl[®]

bisl
business information :

ITIL[™]

agile Scrum

Scaled Agile Framework

Cucumber

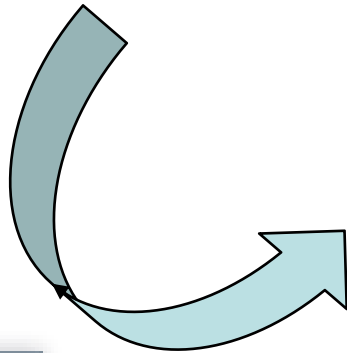
TEAMWORK
Lorem ipsum dolor sit amet
consectetur adipiscing elit, sed
sede ipsum dolor sit amet
consectetur adipiscing elit, sed
sede ipsum dolor sit amet
consectetur adipiscing elit, sed

BUSINESS
Lorem ipsum dolor sit amet
consectetur adipiscing elit, sed
sede ipsum dolor sit amet
consectetur adipiscing elit, sed
sede ipsum dolor sit amet
consectetur adipiscing elit, sed

Test Automation
Selenium

Se

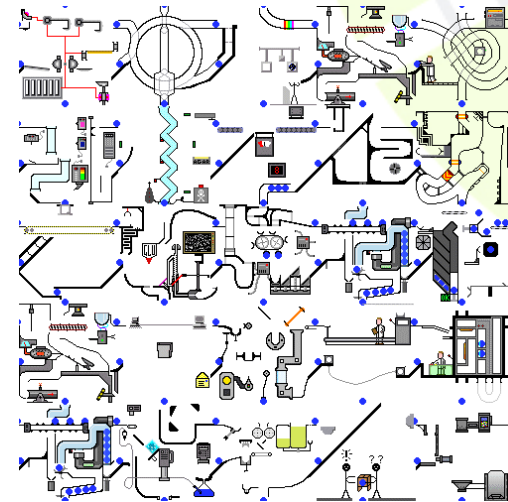
IDEA



4. T-shape combinaties



5. Toekomst – be prepared for



TEST • NET • IS
Business

5. Toekomst – be prepared for



5. Toekomst – be prepared for



TEST NET is
Business

5. Toekomst – be prepared for

"De ontwikkeling van kunstmatige intelligentie kan het einde van de mensheid betekenen."



Stephen Hawking waarschuwde voor de consequenties als AI uiteindelijk even intelligent of zelfs slimmer wordt de mens. "De techniek verbetert zichzelf op een steeds hoger tempo", zei hij. "De mens kan die groei niet bijhouden, omdat biologische evolutie hen tegenhoudt. De mens wordt dan voorbijgestreefd."

5. Toekomst – be prepared for



5. Toekomst – be prepared for

Test 1 uitvoering gisteren

Test 1 uitvoering vandaag



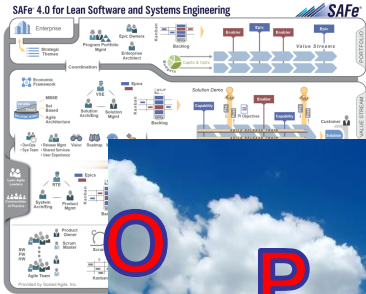
Resultaat test 1 gisteren : 5

Resultaat test 1 vandaag: 6

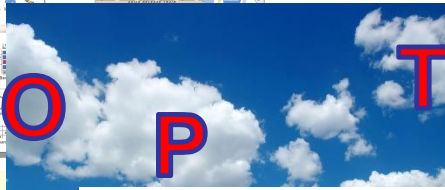
Continues learning

Als tester moeten we leren omgaan met een nieuwe dimensie mbt resultaat beïnvloeding





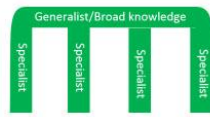
6. Samenvatting



T-shaped



Pi-shaped



Comb-shaped



Vragen?



CIMWeekend in York



CIMSOLUTIONS
Automation for Industry & Business