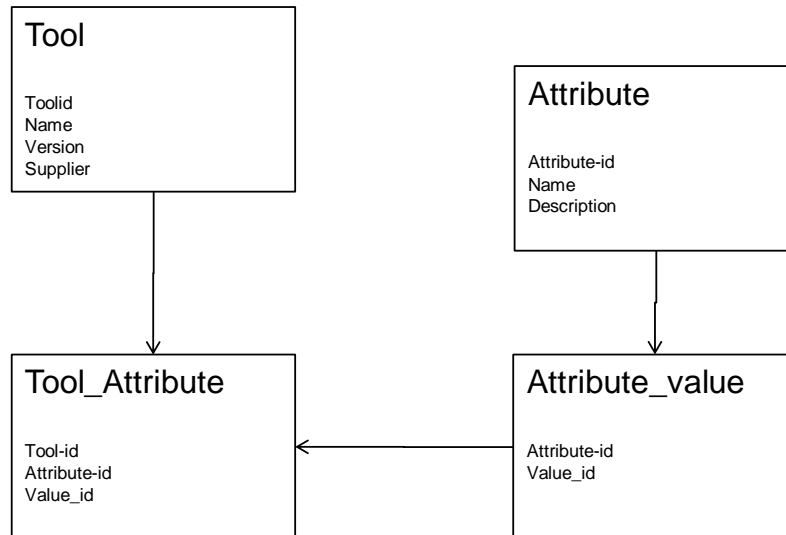


Selection of test tools

Date: June 2010

Design made by: Maurice Siteur, Martin Gijsen, Arjan Kranenburg, Simon van Zessen, Bernd Beersma, Eric Ariens, Con Bracke, John Kronenberg, Rashid Shroki

Datamodel



Tool

The tools delivered by supplier either for free or commercial tools.

Tool-id	Unique identification of the tool
Name	Name of the tool.
Version	Version of the tool.
Supplier	Name of the supplier or group of people who are 'selling' the tool.

Tool_attribute

The combination of a tool and an attribute..

Tool-id	Unique identification of the tool
Attribute-id	Unique identification of an attribute
Value-id	Value of the attribute for a specific tool.

Attribute

The name of specifics you want to use to compare tools with. E.g. Open source.

Attribute-id	Unique identification of an attribute
Name	Name
Description	Description of the attribute.

Attribute_value

The name of specifics you want to use to compare tools with.

Attribute-id	Unique identification of an attribute
Value_id	Value of the attribute for a specific tool.

Use case model

The following use case are indentified:

- UC1 Maintain Attribute and value
- UC2 Maintain tools
- UC3 maintain Tool-Attributes
- UC11 Report all tools
- UC12 Report all tool-attributes
- UC13 Report all Attributes – with values
- UC21 Select tools
- UV31 Upload file (to be considered)

UC1 Maintain Attribute and value

Screen

To maintain the attributes and the values.

UC2 Maintain tools

Screen

To maintain tools

UC3 Maintain Tool-Attributes

Screen

To maintain the tool attributes

UC11 report tools

Reports for the keeper of the system.

Simple report on the database.

UC12 report tool attributes

Reports for the keeper of the system.

Simple report on the database.

UC13 report attributes with values

Reports for the keeper of the system.

Simple report on the database.

UC21 Select tool

Screen

User can select attributes and accompanying values.

After pushing the button 'GO' the selection of tools is on the screen.

UC31 Upload file

File with all data for a tool.

List of characteristics

Maintenance/control of site

The keeper is Maurice Siteur (msiteur@casema.nl).

Activity list:

- Lijst kermerken maken met een omschrijving
- DB hosten
- Webpagina maken voor data invoer
- Initiele vulling - van internet halen
- Bekend maken
- Beheer van data achteraf