



Rational Unified Process



IBM Nederland SWG
Marc van Lint
Rational Technical Consultant
ISTQB Foundation Certified
marc_van_lint@nl.ibm.com
06-53244587

Dit is NIET

- ◆ Dit is geen marketing presentatie
- ◆ Dit is geen volledige RUP cursus
- ◆ Dit is geen training!
- ◆ Niet specifiek voor test(ers)
- ◆ Aangepast aan laatste stand van RUP 7.0
- ◆ Een selectie uit heel veel informatie
- ◆ Geen advies over combinaties zoals...
 - RUP – TMAP
 - RUP – Prince2
- ◆ Etc etc etc...

Dit is wel

Een presentatie ter kennismaking met
Rational Unified Process voor



- ◆ Gebaseerd op officiële RUP trainings materialen

3



Agenda

- ◆ Best practices
- ◆ RUP – Process
- ◆ RUP knowledge base

4



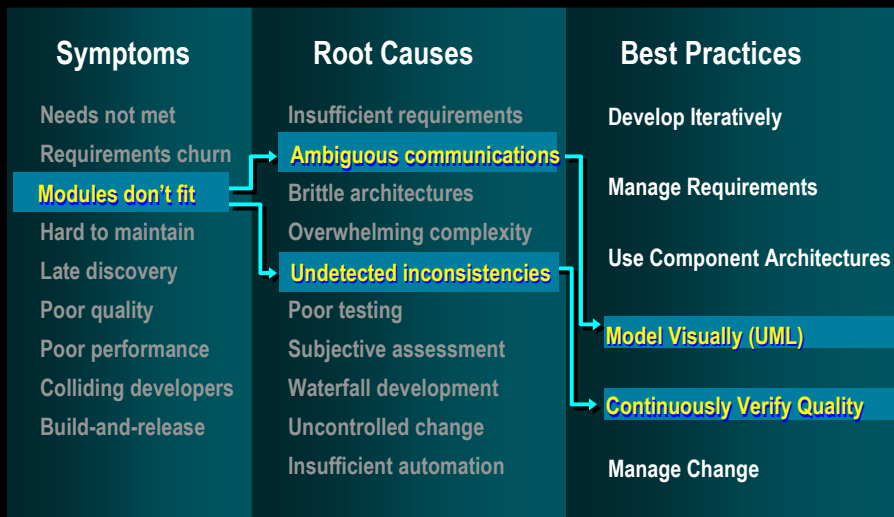
Symptoms of Software Development Problems

- ✓ User or business needs not met
- ✓ Requirements churn
- ✓ Modules don't integrate
- ✓ Hard to maintain
- ✓ Late discovery of flaws
- ✓ Poor quality or end-user experience
- ✓ Poor performance under load
- ✓ No coordinated team effort
- ✓ Build-and-release issues

5



Trace Symptoms to Root Causes



6



Practice 1: Develop Iteratively

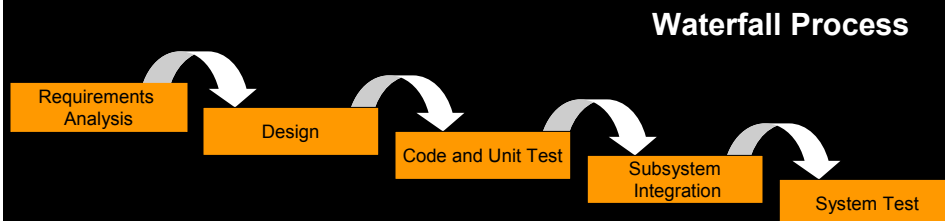
Best Practices
Process Made Practical

Develop Iteratively
Manage Requirements
Use Component Architectures
Model Visually (UML)
Continuously Verify Quality
Manage Change

7



Waterfall Development Characteristics

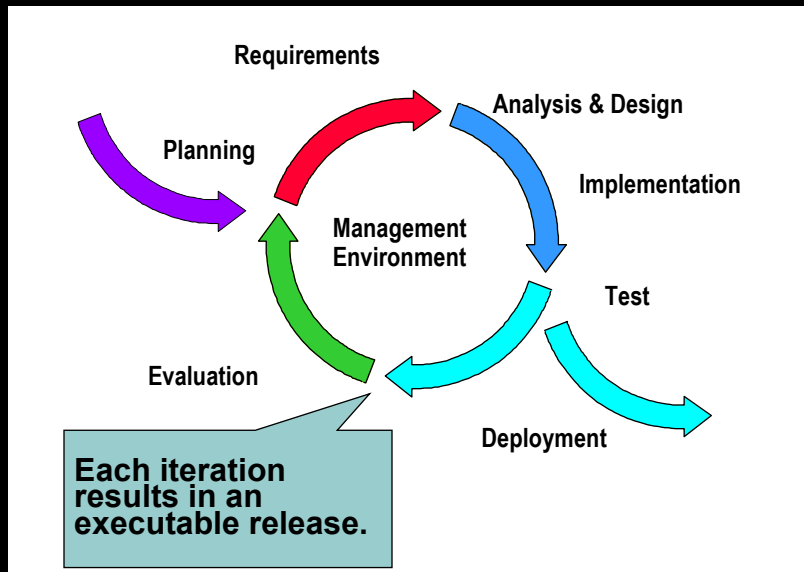


- ◆ Delays confirmation of critical risk resolution
- ◆ Measures progress by assessing work-products that are poor predictors of time-to-completion
- ◆ Delays and aggregates integration and testing
- ◆ Precludes early deployment
- ◆ Frequently results in major unplanned iterations

8



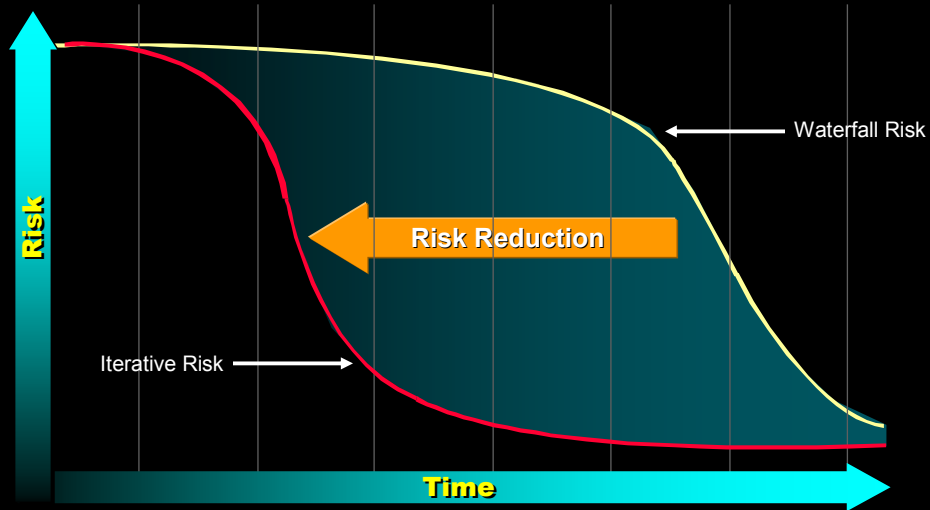
Iterative Development Produces Executables



9



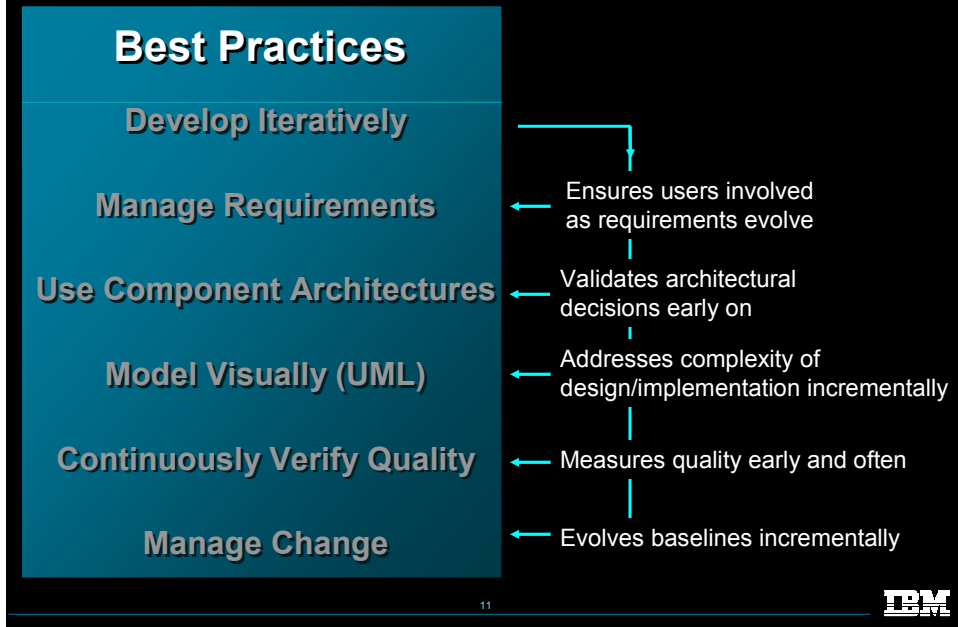
Risk Profiles



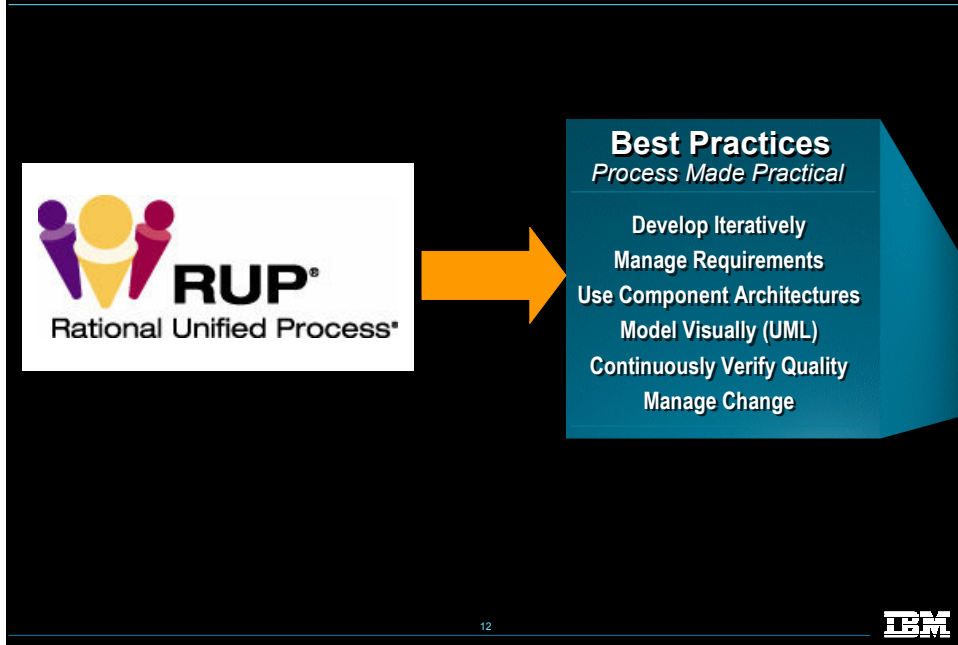
10



Best Practices Reinforce Each Other: An Example

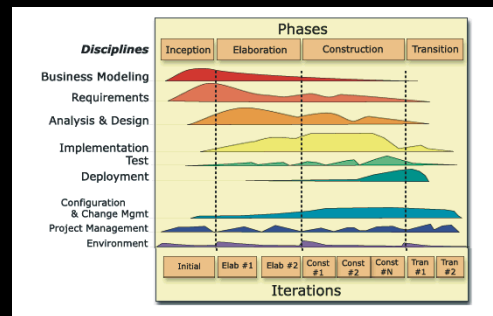


RUP Implements Best Practices



Achieving Best Practices Through a Process

- ◆ Iterative approach
- ◆ Guidance for activities and artifacts
- ◆ Process focus on architecture
- ◆ Use cases which drive design and implementation
- ◆ Models which abstract the system



13



RUP Organization

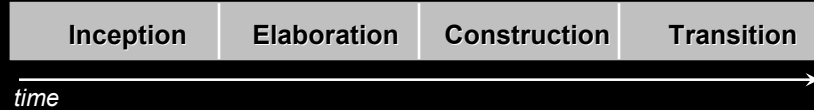
RUP is organized:

- ◆ By time
 - Phases and iterations
- ◆ By content
 - Disciplines

14



RUP Organization By Time



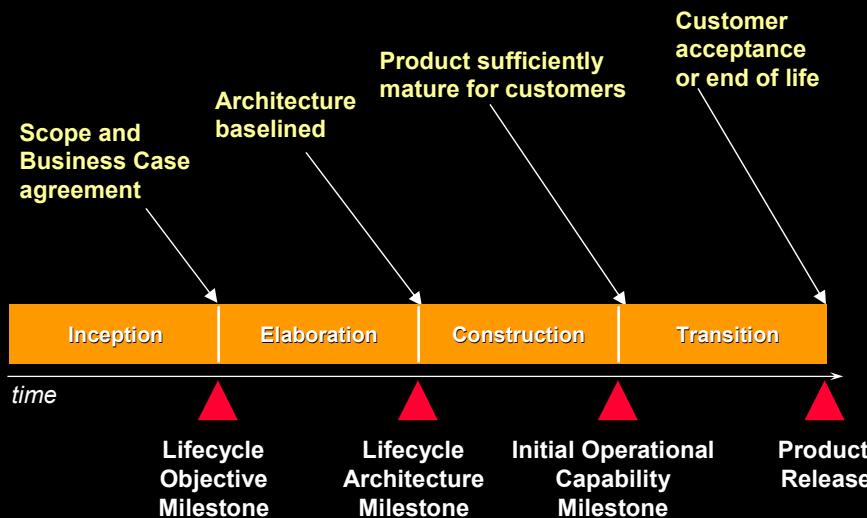
Rational Unified Process has four phases:

- **Inception:** Define the scope of project
- **Elaboration:** Plan project, specify features, baseline architecture
- **Construction:** Build the product
- **Transition:** Transition the product into end-user community

15



Major Milestones: Business Decision Points



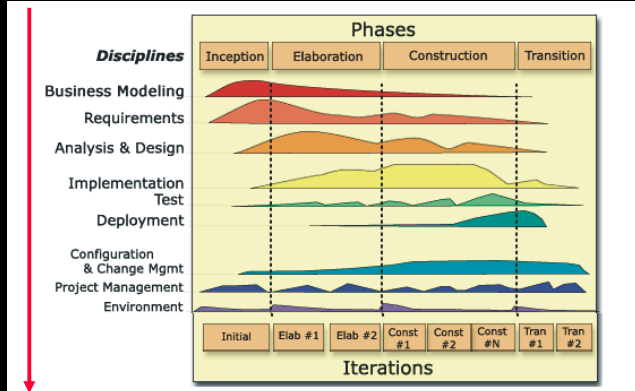
16



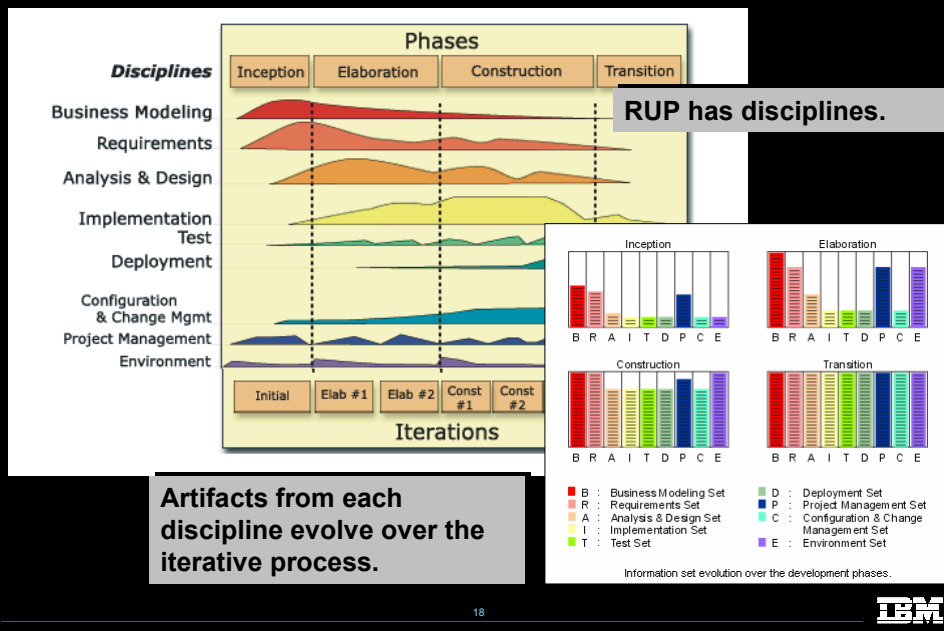
RUP Organization By Content

RUP content is organized into **disciplines**.

A **discipline** is a collection of activities that are all related to a major 'area of concern'.



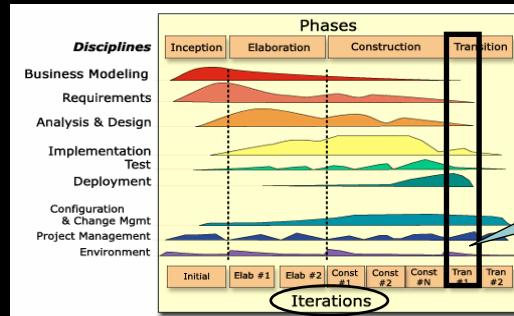
RUP Disciplines



18



What Is an Iteration?



In an iteration, you walk through all disciplines.

Iteration: A distinct sequence of activities with a baselined plan and evaluation criteria resulting in a release (internal or external).

An iteration is time boxed!



A phase has one or more iterations.

19



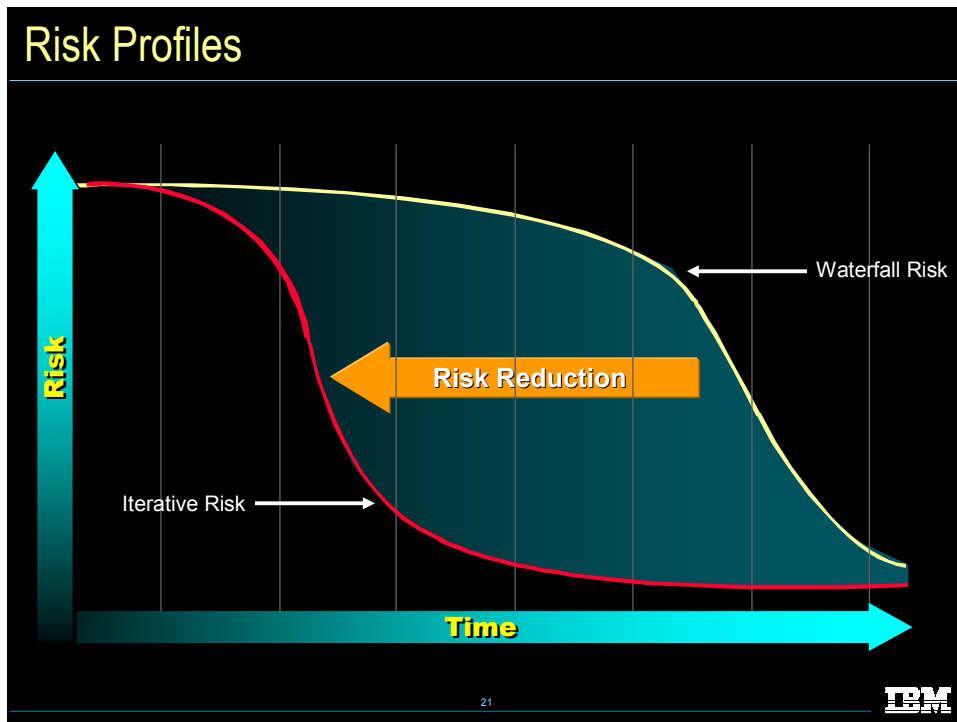
Concepts That Drive Iterative Development

Some important concepts that affect iterative development are:

- ◆ Early mitigation of risk
- ◆ Early baselining of architecture
- ◆ Use of objective metrics

20

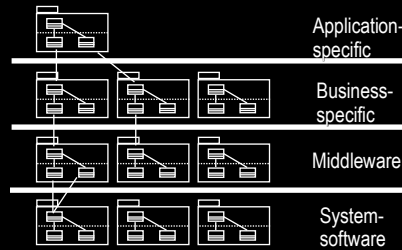




- ### Risk Reduction Drives the Iterative Lifecycle
- ◆ Early iterations should address the risks of highest magnitude.
 - ◆ Risk assessment is a continuous process; risks change over time.
 - ◆ An updated Risk List is input to the activity Develop Iteration Plan.
- The IBM logo is visible in the bottom right corner.

An Executable Architecture

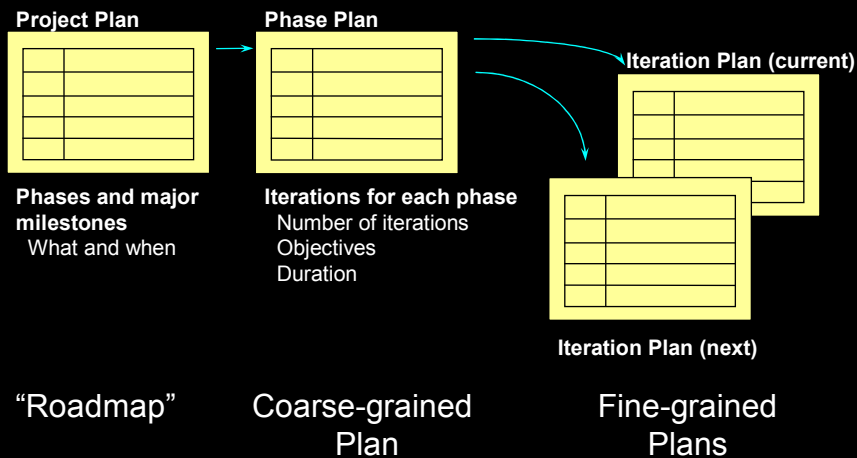
- ◆ A (testable) validation of the architecture
 - Tested via architecturally-significant use cases
- ◆ The baseline for the rest of development
- ◆ Provides mitigation for numerous risks



23

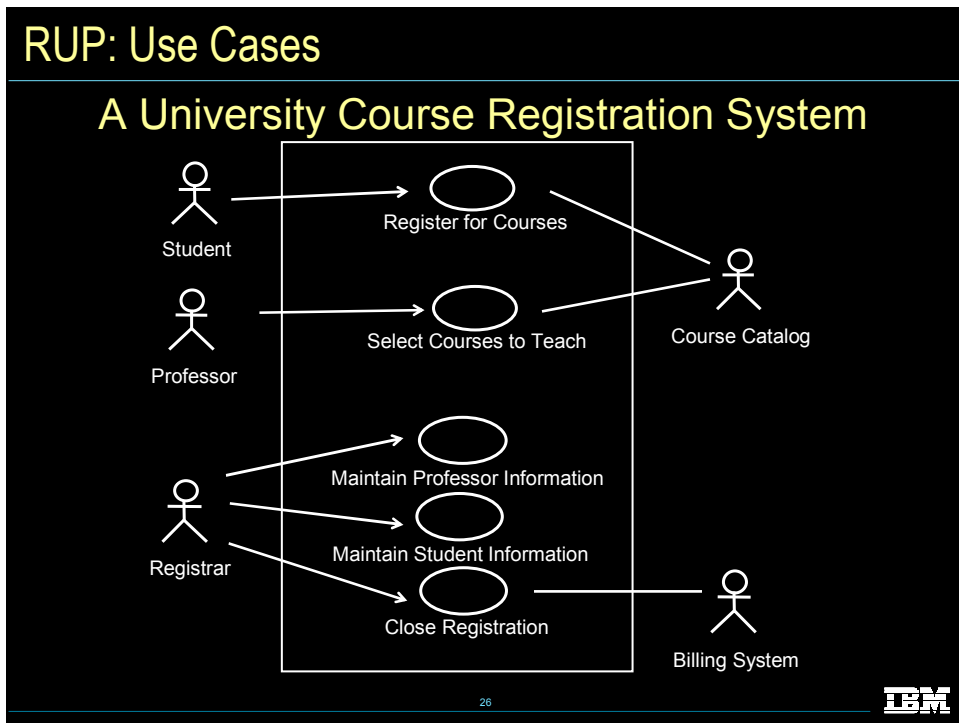
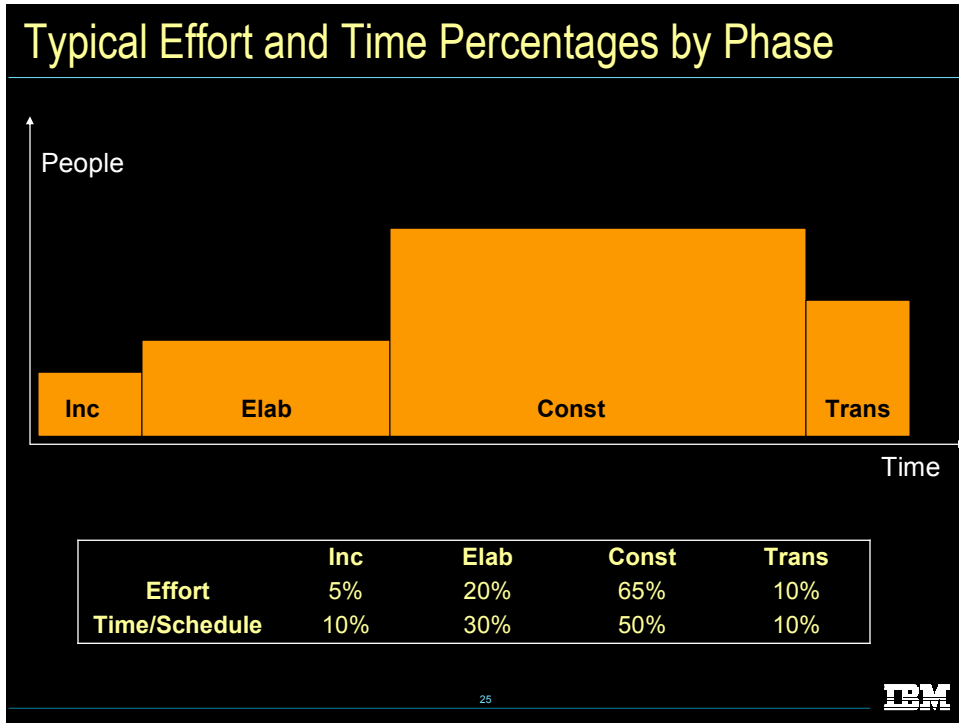


Planning for Iterative Development



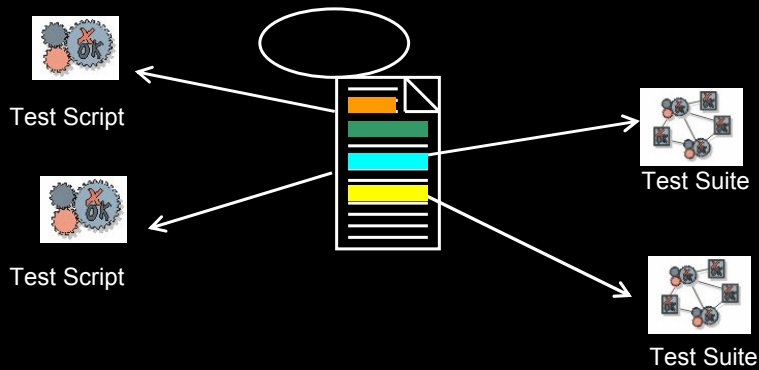
24





Use Cases as a Basis for Test Planning

The complete behavior of a use case is tested using Test Scripts and Test Suites.



27

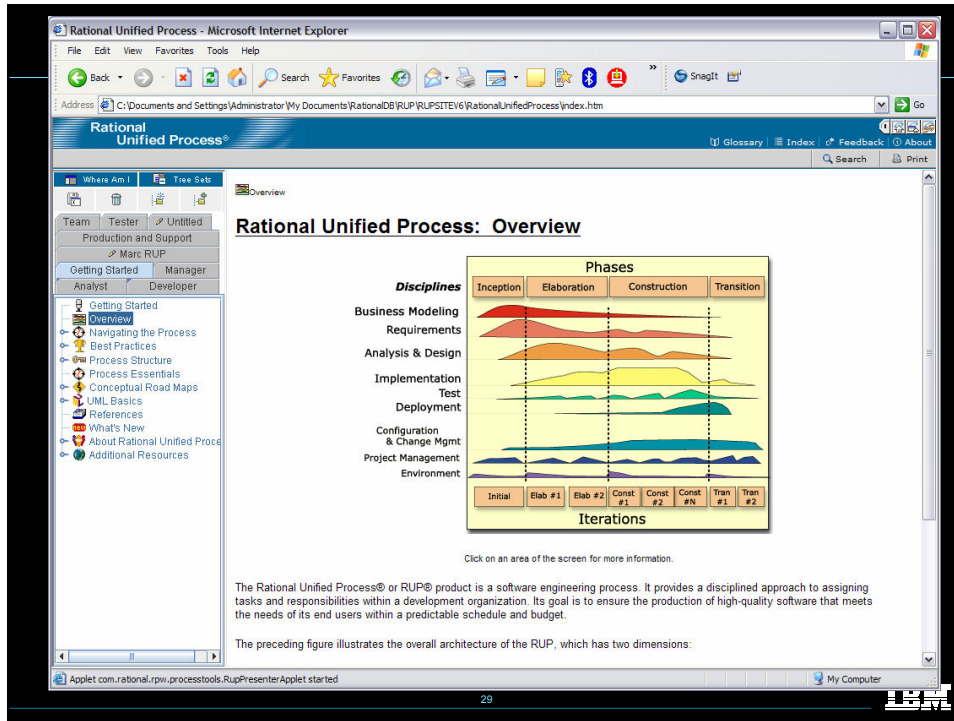


RUP Knowledge base

- ◆ 'Jump start'
- ◆ Customizable
- ◆ Guidance
 - Process (time)
 - Roles (discipline)

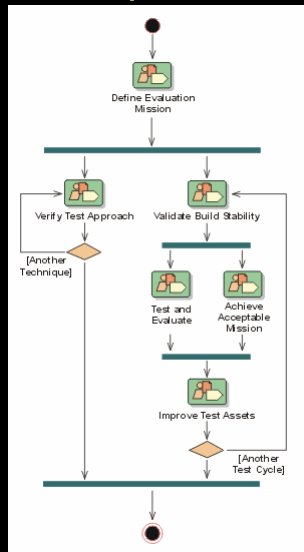
28





Some contents

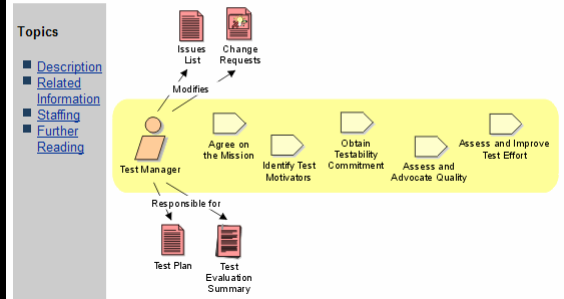
◆ Test process



◆ Test Manager

Role: Test Manager

The Test Manager role is tasked with the overall responsibility for the test effort's success. The planning and management, and resolution of issues that impede the test effort.



Huiswerk:

www.ibm.com/developerworks

31



Thank You

32

